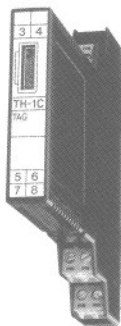


# Temperature Transmitter

## TH-1C

NEW



### Input Specification

Sensor	Code	Input temperature	Minimum Span
R	R	0 to 1700°C	400°C
K	K	-50 to 1200°C	100°C
E	E	-50 to 900°C	100°C
J	J	-50 to 1000°C	100°C
T	T	-50 to 350°C	100°C
S	S	0 to 1700°C	500°C
B	B	200 to 1700°C	1000°C
Pt 100Ω	P	-150 to 800°C	100°C

#### Thermocouple Input Specification

Accuracy of Cold Junction Compensation  $\pm 1^\circ\text{C}$  (10 to 30°C)  
(For thermocouples other than B type thermocouple)

#### RTD Input Specification

Allowable leadwire resistance: Less than 10 Ω  
Current following through RTD: 1mA

### Output Specification

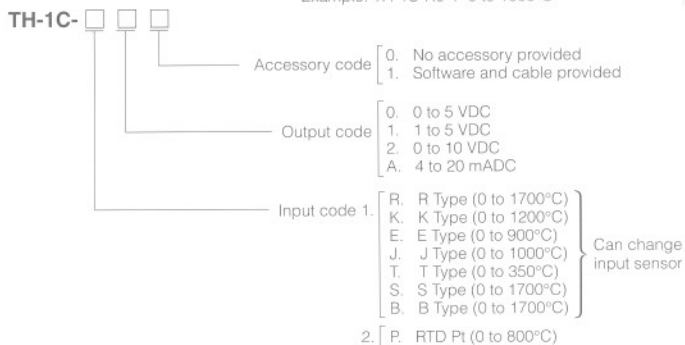
Code	Output signal	Output Load resistance	Output at burnout
0	DC 0 to 5 V	More than 2k Ω	Approx 120% F.S
1	DC 1 to 5 V		
2	DC 0 to 10 V	More than 4k Ω	
A	DC 4 to 20 mA	Less than 550 Ω	

### General Specification

Accuracy:  $\pm 0.25\%$  F.S (At  $25 \pm 2^\circ\text{C}$ )  
 Temperature characteristic:  $\pm 0.02\%$  F.S/ $^\circ\text{C}$   
 Power supply voltage variation:  $\pm 0.1\%$  F.S  
 Response Time: Less than 2 sec (0 to 90%)  
 Insulation resistance: Between input and output/power supply;  
 More than 100 MΩ at 500 VDC  
 Dielectric strength: Between input and output/power supply;  
 For 1 min. at 1500 VAC  
 Power supply voltage: 24V DC  $\pm 10\%$   
 Consuming current: Less than 60 mA (At 24 VDC)  
 Operating ambient temperature:  $-5$  to  $50^\circ\text{C}$   
 Operating ambient humidity: Less than 90%RH (No-condensing)  
 Storage temperature:  $-10$  to  $70^\circ\text{C}$   
 Storage humidity: Less than 60%RH (No-condensing)  
 Case material: Black PC resin 94V-2  
 Weight: Approx. 80g

### Ordering Code

Example: TH-1C-K0-1 0 to 1000°C

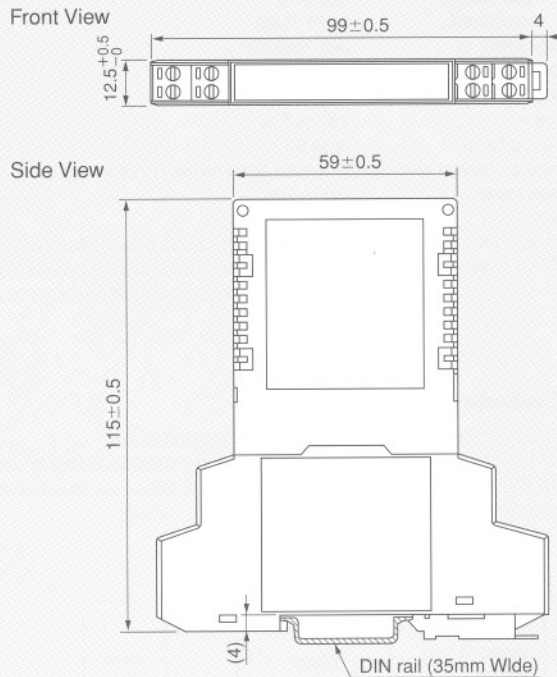


As input specifications, separately specify the zero and span temperatures (in steps of 1°C).  
 Otherwise, any one of the above temperatures is selected.  
 When purchasing only the setting soft cable, specify 'TH-1C-XX-1.'

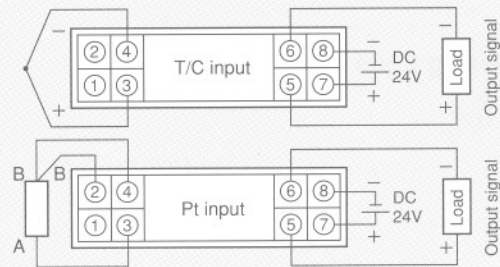
### Features

- Slim width 12.5mm
- DIN rail mount type
- Power supply 24VDC  $\pm 10\%$
- Input sensor  
R,K,E,J,T,S,B, PT-100 ohm

### Dimensions



### Connection Diagram



⚠ Note: Pay attention to the connection polarity.

Transmitter

Sales, Service, Technical support  
**Topac Inc.**

101 Derby St., Hingham MA 02043 USA  
 www.topac.com, sales@topac.com  
 Tel: 781 740 8778 Fax: 781 740 8779