



Features

- ★ Standard DIN size.
- ★ Leading zero suppression
- ★ Latch function
- ★ 12Vdc, 50 mA built in excitation. (Sensor power supply)

Ordering code

AC - 116B - 2

Code	Power supply
1	90 to 132Vac
2	180 to 264Vac

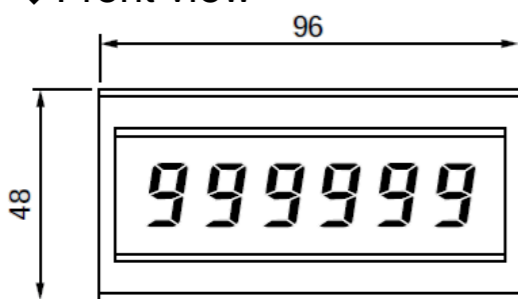
Code	Description
2	with Count backup function

Specifications

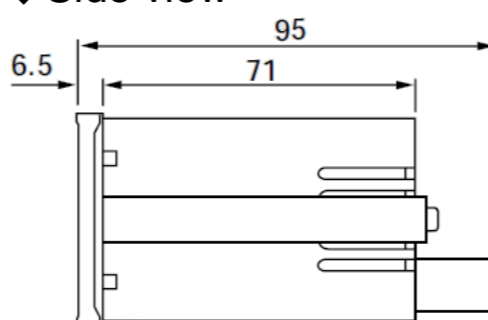
Count input	Contact : Counted when contact is closed (Use built in external power supply) Voltage : 'L' Counted at the rise to 'H' 'L' : 0 to 2Vdc, 'H' : 4.5 to 30Vdc
Maximum counting speed	10cps/5kcps (cycle per second) (By input terminal selection)
Minimum pulse width	10cps : 50ms, 5kcps : 0.1ms (cycle per second)
Input resistance	10cps : 6kΩ, 5kcps : 12kΩ (cycle per second)
Display	Max. 999999 counts (6 digits) LED (red) 14.2mm
Zero display	Leading zero suppression
Memory protection	EEPROM (non-volatile memory) Duration : 10 years (Number of rewrites : 100,000 times)
Decimal point	Able to set to any digit
External control	<ul style="list-style-type: none"> •Reset (When voltage is applied to reset terminals) Contact : Reset at rise to 'H' Voltage : 'L' Reset at rise to 'H', 'L' : 0 to 2Vdc, 'H' : 4.5 to 30Vdc Minimum pulse width, 0.1ms or more input resistance 6kΩ Response time ON/OFF : 0.1ms or less Automatically reset when power is turned ON (Not reset for battery built in type) •Latch (Latched when voltage is applied to latch terminals) If latch input is applied during input rise is displayed without any modifications. However, Since counting continues, the present counted value is displayed when latch input is released. Contact : Latched when contact is closed (Used built in excitation power supply) Voltage : 'L' Latched rise to 'H', 'L' : 0 to 2Vdc, 'H' : 4.5 to 30Vdc Response time : 0.1ms or less Input resistance 6kΩ
Built in excitation	External power supply for sensor +12Vdc, 50mA (at 100/200 Vac) Ripple : 5% or less
Operating temperature	0 to 50°C
Operating relative humidity	35 to 85% (non-condensing)
Power supply	90 to 132Vac, 180 to 264Vac
Power consumption	Approx. 3.5VA at (100Vac/200V, when 50mA excitation power supply)
Dimensions	96mm(W) x 48mm(H) x 95mm(D) DIN size
Dielectric strength	1500VAC per 1 min. : Power supply terminal - Earth(E), Ground(GND)
Insulation resistance	500Vdc, 100MΩ or more on the above terminals
Weight	Approx. 350g

Dimensions

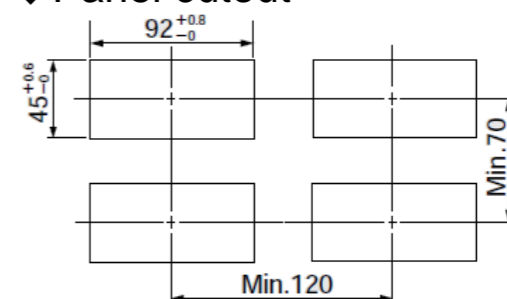
◆ Front view



◆ Side view

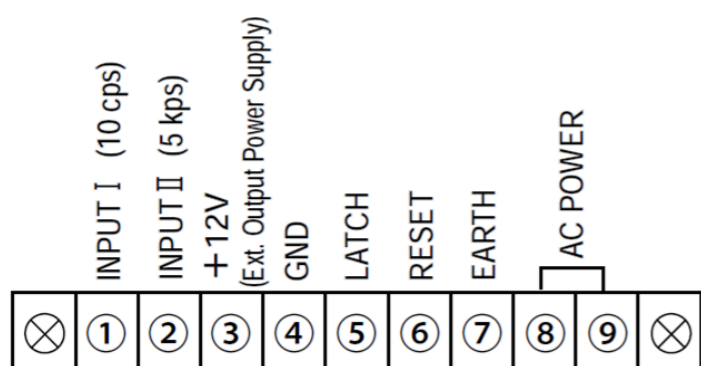


◆ Panel cutout



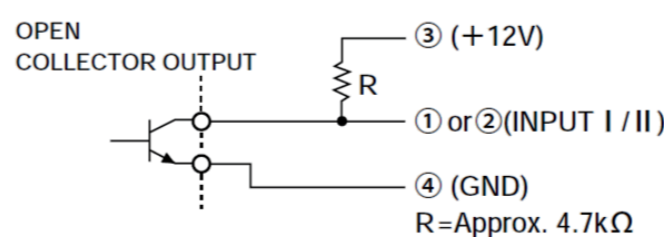
(Unit : mm)

Terminal Connections



(DON'T USE INPUT I or II SAME TIME)

* IF YOU USE OPEN COLLECTOR,
PLEASE CONNECT RESISTOR AS FOLLOWS.



ONE COUNT WHEN TRANSISTOR ON → OFF

* Specification is subject to change without notice